



KINEMATIC VISCOSITY BATH

CONSTANT TEMPERATURE BATH(SOLID STATE) KINEMATIC VISCOSITY BATH: DIGITAL

Full Visibility, High precision. Stainless steel inner tank and outer of powder coated CR sheet. Toughened glass windows. Control of temp. By uP based PID controllers. Continuously variable heater for greater accuracy. Boost heater cut-off automatically when not required. Pump to provide gentle yet through agitation of tank media. Mains 230V,50Hz AC.

Temp. range : 5°C above amb. to 120°C.

Control Accuracy : ±0.05°C or 0.25% of FS.

Resolution : 0.1 \ 0.01°C

| <u>CHAMBER SIZE</u> | | | <u>VOLUME</u> | <u>SUITABLE</u> | <u>POWER</u> |
|---------------------|-----|-----|---------------|-----------------|--------------|
| L | W | D | LTR | FOR | (KW) |
| 200 | 260 | 350 | 28 | 4 VM | 2.00 |
| 370 | 260 | 350 | 40 | 6 VM | 2.75 |



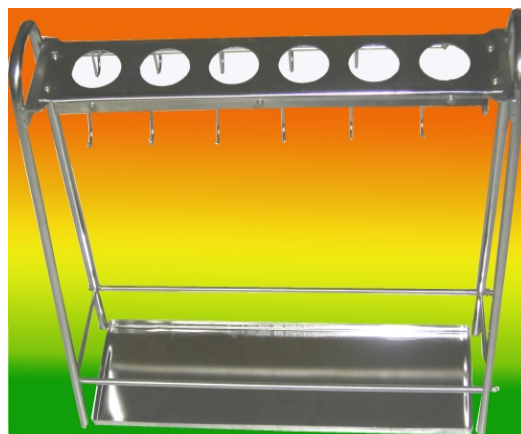
BATH WITH TRAY



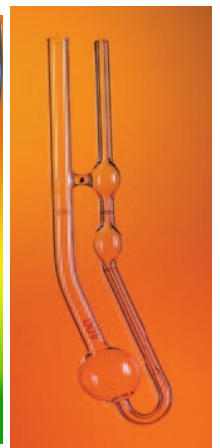
REFRIGERATED VISCOSITY BATH

OPTIONAL ACCESSORIES

- Viscometers - Ostwald forward & reverse, Canonfensky, etc.
- Viscometer Stand
- Viscometer Tray
- Stop Watch
- High set safety cutoff device
- Resolution of 0.01°C with a 5 digit LED display
- Lighting Attachment
- Coil for circulation of chilled water
- Pump Assembly for better uniformity
- Bath Media(for Temp. upto 120°C)
- Refrigetation system for below ambient temp. requirements
- Traceable Calibration Report



VISOMETER STAND



VISCOMETERS



D-428, 10th Main, Peenya II Stage,
Peenya Industrial Area,
Bangalore-560058.
Telefax:091-080-23364115/23349239
e@mail: tic_ci@yahoo.co.in;
tic_ci80@hotmail.com